

END CAPS

020-005

McIntosh

The Compendium



020-005 (5-7/16" OR 5-3/16")

Gold anodized aluminum. Polished face, sides, top and bottom. Press-fit onto pins protruding from the ends of the face plate. Removable (to access side controls). Reversible. Used on:

PREAMP:

C 11
C 20 (MID)
C 20 (LATE)

TUNER:

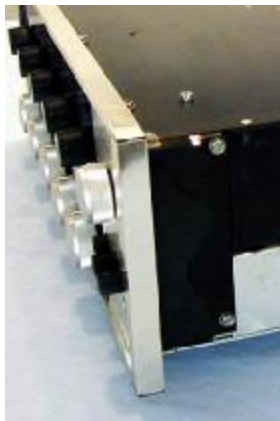
MR 65
MR 65A
MR 65B
MR 66

TUNER/PRE-AMP:

MX 110 (EARLY)
MX 110 (MID)

OCILLOSCOPE:

MI 2



MR 65

Note: McIntosh made an undocumented change in the front panels and end caps during production. Some early units had end caps 5-3/16" tall and with a 4-1/2" pin spacing - most of the above models had end caps 5-7/16" tall and with a 4-3/4" pin spacing. The McIntosh part number was the same for both versions of the end caps.

020-005 END CAPS - Used from 1960 - 1963.

END CAPS

018-043 & 018-044 / 018-520 & 018-521

McIntosh

The Compendium



018-044 (L) & 018-043 (R) (5-7/16")
018-520 (L) & 018-521 (R) (5-7/16") for C 22 CE

Anodized aluminum. Polished face, top and bottom. Sanded sides. Off-center, "point" on face. Milled groove on inside for upper glass. Attached with screws. Used on:

PREAMPS:

C 22
C 24
C 22 CE

TUNERS:

MR 67
MR 71

TUNER/PRE-AMPS:

MX 110 (LATE)

INTEGRATED AMPS:

MA 230
MA 5100



C 22

018-043 & 018-044 END CAPS - Used from 1963 - 1972

018-520 & 018-521 END CAPS - Used from 1995 - ????

END CAPS

018-132 & 018-133

McIntosh

The Compendium



018-133 (L) & 018-132 (R) (5-7/16")

Anodized aluminum. Polished face, top and bottom. Sanded sides. Off-center, "point" on face. Milled inset on outside. Attached with screws. Used on:

SCOPE:

MI 3



MI 3

018-132 & 018-133 END CAPS - Used from 1964 - 1971.

END CAPS

018-120

McIntosh

The Compendium



018-120 (5-7/16")

Anodized aluminum. Polished face, top and bottom. Sanded sides. Off-center, "point" on face. Reversible. Attached with screws. Used on:

POWER AMP:

MC 2505

PREAMPS:

C 26

C 28

TUNERS:

MR 73

MR 74

MR 77

TUNER/PRE-AMPS:

MX 112

MX 113

MX 114

MX 115



C 26

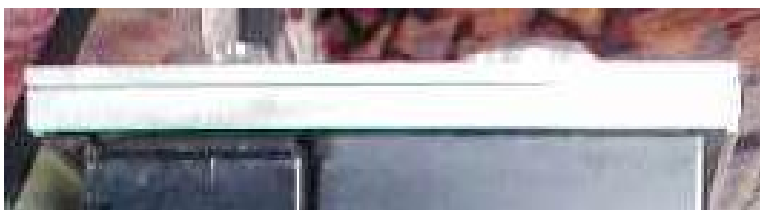
018-120 END CAPS - Used from 1969 - 1985.

END CAPS

018-080

McIntosh

The Compendium



018-080 (5-1/2")

Anodized aluminum. Polished face, top and bottom and sides. "Stepped" side. Flat face. Reversible. Attached with screws. Used on:

RECEIVERS:

MAC 1500
MAC 1700



MAC 1500

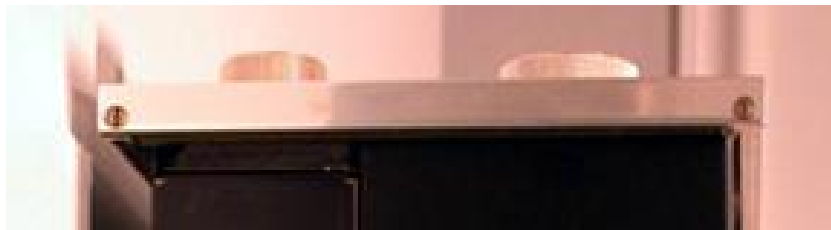
018-080 END CAPS - Used from 1965 - 1973.

END CAPS

018-0??

McIntosh

The Compendium



018-0?? (5-1/2")

Anodized aluminum. Polished face, top and bottom and sides. Smooth side. Flat face. Reversible. Attached with screws. Used on:

RECEIVER:

MAC 1900



MAC 1900

018-0?? END CAPS - Used from 1973 - 1978.

END CAPS

018-112

McIntosh

The Compendium



018-112 (7-1/8")

Anodized aluminum. Polished face, top and bottom. Sanded sides. Off-center, "point" on face. Finger slots on sides. Reversible. Attached with screws. Used on:

POWER AMP:

MC 2105



MC 2105

018-112 END CAPS - Used from 1967 - 1977.

END CAPS

018-154

McIntosh

The Compendium

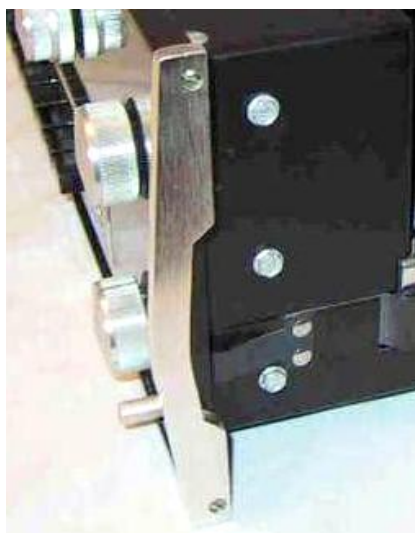


018-154 (5-7/16")

Anodized aluminum. Polished face, top and bottom. Sanded sides. Off-center, "point" on face. Finger slots on side. Reversible. Attached with screws. Used on:

INTEGRATED AMP:

MA 6100



MA 6100

018-154 END CAPS - Used from 1972 - 1979.

END CAPS

018-204

McIntosh

The Compendium



018-204 (3-5/8")

Anodized aluminum. Polished face, top and bottom. Sanded sides. Flat face. Finger slots on side. Reversible. Attached with screws. Used on "slim-line" models:

POWER AMP:

MC 502

PRE-AMP:

C 504

TUNERS:

MR 500

MR 510



MC 502

018-204 END CAPS - Used from 1978 - 1990.

END CAPS

018-160

McIntosh

The Compendium

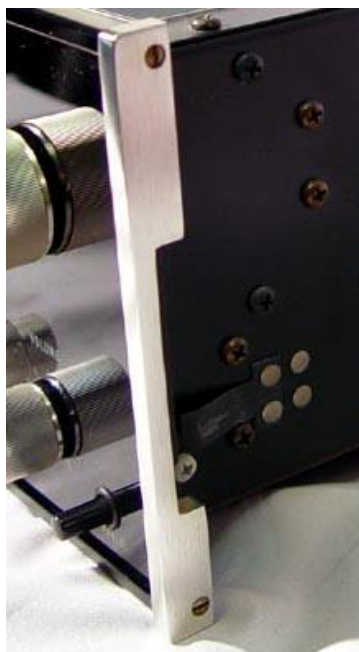


018-160 (5-3/8") SECURED WITH 101-035 SCREWS

Anodized aluminum. Polished face, top and bottom. Sanded sides. Flat face. Finger slots on side. Reversible. Attached with screws. Used on:

<i>POWER AMPS:</i>	<i>PRE-AMPS:</i>	<i>TUNERS:</i>	<i>TUNER/PRE-AMP:</i>	<i>SCOPE:</i>
MC 2125	C 27	MR 75	MX 117	MPI 4
MC 2155	C 29	MR 78		
	C 30	MR 80		
	C 32			
	C 33			

**INTEGRATED AMP:
MA 6200**



C 27

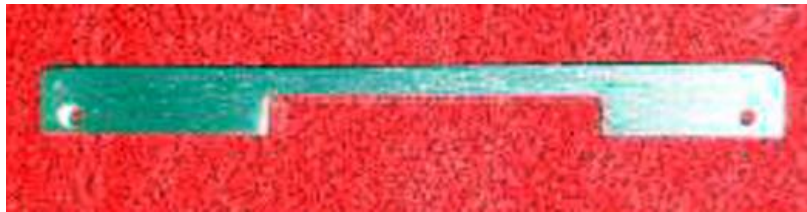
018-160 END CAPS - Used from 1973 - 1986.

END CAPS

018-173

McIntosh

The Compendium



018-173 (7-1/8") SECURED WITH 101-042 SCREWS

Anodized aluminum. Polished face, top and bottom. Sanded sides. Flat face. Finger slots on side. Reversible. Attached with screws. Used on:

POWER AMPS:

MC 2205

MC 2255

MC 2002



MC 2255

018-173 END CAPS - Used from 1975 - 1988.

END CAPS

018-438

McIntosh

The Compendium



018-438 (3-5/8")

Anodized aluminum. Brushed satin finish on face, sides, top and bottom. Flat face.
Reversible. Attached with screws. Used on "slim line" models:

POWER AMP:

PRE-AMP:

TUNER:

HOME THEATER:

MC 7100

C 712

MR 7084

MAC 3

MSD 4



MC 7100

018-438 END CAPS - Used from 1992 - 1999.

END CAPS

018-232

McIntosh

The Compendium



018-232 (5-3/8")

Anodized aluminum. Brushed satin finish on face, sides, top and bottom. Flat face.
Reversible. Attached with screws. Used on:

<i>POWER AMPS:</i>	<i>PRE-AMPS:</i>	<i>TUNERS:</i>	<i>DISC PLAYERS:</i>
MC 7150	C 34V	MR 7082	MCD 7000
MC 150	C 31V	MR 7083	MCD 7005
	C 35		MCD 7007
	C 37		MCD 7008
	C 36		MCD 7009
	C 38		MCD 7010
	C 40		
	C 100		
	<i>HOME THEATER:</i>	<i>INTEGRATED AMPS:</i>	
	MX 118	MA 6400	
		MA 6450	



MC 7150

018-232 END CAPS - Used from 1985 - 1999.

END CAPS

018-345

McIntosh

The Compendium



018-345 (7-1/8")

Anodized aluminum. Brushed satin finish on face, sides, top and bottom. Flat face.
Reversible. Attached with screws. Used on:

POWER AMPS: **PRE-AMP:** **INTEGRATED AMPS** **HOME THEATER:**

MC 7270
MC 7200
MC 7300
MC 7106
MC 7108
MC 7104
MC 300

C 39

MA 6800
MA 6850

MX 130

MULTI-ZONE:

CR 10
CR 12



C 39

018-345 END CAPS - Used from 1985 - 1999.

END CAPS

018-???

McIntosh

The Compendium



018-??? (7-5/8")

Anodized aluminum. Brushed satin finish on face, sides, top and bottom. Flat face.
Reversible. Attached with screws. Used on:

DISC PLAYER:

MLD 7020



MLD 7020

018-??? END CAPS - Used from 1998 – 200?

END CAPS

018-610

McIntosh

The Compendium



018-610 (3-5/8")

Anodized aluminum. Brushed satin finish on face, sides, top and bottom. Tapered face from outer edge to inner edge. Reversible. Attached with screws. Used on:

POWER AMP:

MC 122

PRE-AMP:

C 15

D TO A CONVERTER:

MDA 700



C 15

018-610 END CAPS - Used from 1998 – 200?

END CAPS

018-630

McIntosh

The Compendium



018-630 (5-3/8")

Anodized aluminum. Brushed satin finish on face, sides, top and bottom. Tapered face from outer edge to inner edge. Reversible. Attached with screws. Used on:

<i>POWER AMPS:</i>	<i>PRE-AMPS:</i>	<i>TUNER:</i>	<i>DISC PLAYERS:</i>	<i>MUSIC SERVER:</i>
MC 162	C 42	MR 85	MVP 831	MS 300
MC 202	C 41		MVP 841	
	C 45		MCD 205	
	C 46		MVP 851	
			MVP 861	



MVP 841

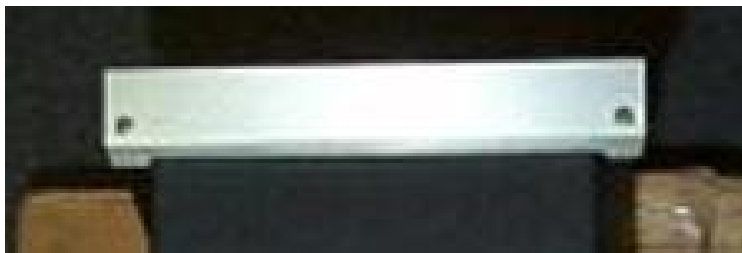
018-630 END CAPS - Used from 200? – 200?

END CAPS

018-???

McIntosh

The Compendium



018-??? (6")

Anodized aluminum. Brushed satin finish on face, sides, top and bottom. Tapered face from outer edge to inner edge. Reversible. Attached with screws. Used on:

PRE-AMPS:

C 200
C 220

DISC PLAYER:

MCD 201



C 200

018-??? END CAPS - Used from 200? – 200?

END CAPS

018-612

McIntosh

The Compendium



018-612 (7-1/8")

Anodized aluminum. Brushed satin finish on face, sides, top and bottom. Tapered face from outer edge to inner edge. Reversible. Attached with screws. Used on:

POWER AMPS: **HOME THEATER:** **INTEGRATED AMPS:** **MULTI-ZONE:**

MC 7205
MC 126
MC 58
MC 206

MX 132

MA 6900
MA 6500

CR 16



MC 7205

018-612 END CAPS - Used from 200? – 200?

END CAPS

018-???

McIntosh

The Compendium



018-??? (7-5/8")

Anodized aluminum. Brushed satin finish on face, sides, top and bottom. Tapered face from outer edge to inner edge. Reversible. Attached with screws. Used on:

PRE-AMP:

C 2200

INTEGRATED AMP:

MA 6300

HOME THEATER:

MX 134

MX 119



C 2200

018-??? END CAPS - Used from 200? – 200?

END CAPS

018-615

McIntosh

The Compendium



018-615 (8-7/8")

Anodized aluminum. Brushed satin finish on face, sides, top and bottom. Tapered face from outer edge to inner edge. Reversible. Attached with screws. Used on:

POWER AMP:

MC 352



MC 352

018-615 END CAPS - Used from 200? – 200?

END CAPS

018-???

McIntosh

The Compendium



018-??? (9-1/2")

Anodized aluminum. Brushed satin finish on face, sides, top and bottom. Tapered face from outer edge to inner edge. Reversible. Attached with screws. Used on:

POWER AMP:

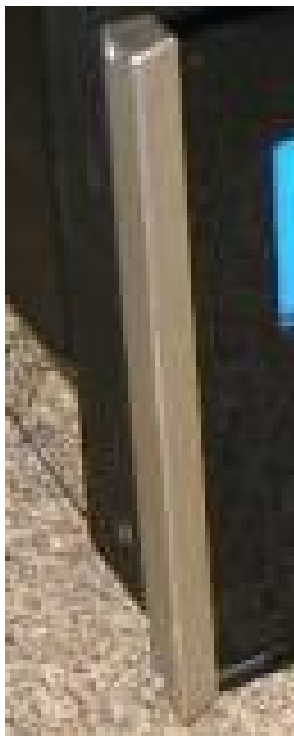
MC 207

HOME THEATER:

MHT 100

MHT 200

MX 135



MHT 100

018-??? END CAPS - Used from 200? – 200?

END CAPS

018-615

McIntosh

The Compendium



018-615 (10-1/8")

Anodized aluminum. Brushed satin finish on face, sides, top and bottom. Tapered face from outer edge to inner edge. Reversible. Attached with screws. Used on:

POWER AMP:

MC 2102

INTEGRATED AMP:

MA 2275



MC 2102

018-615 END CAPS - Used from 200? – 200?

END CAPS

018-???

McIntosh

The Compendium



018-??? (6")

Anodized aluminum. Brushed satin finish on face, sides, top and bottom. Stepped transition between outer beveled edge and flat inner portion of face. Reversible. Attached with screws. Used on:

DISC PLAYER:

D TO A CONVERTER:

MCD 1000

MDA 1000



MCD 1000

018-??? END CAPS - Used from 200? – 200?

END CAPS

018-717

McIntosh

The Compendium



018-717 (8-13/16")

Anodized aluminum. Brushed satin finish on face, sides, top and bottom. Stepped transition between outer beveled edge and flat inner portion of face. Reversible. Attached with screws. Used on:

POWER AMP:

MC 501



MC 501

018-717 END CAPS - Used from 200? – 200?

END CAPS

018-???

McIntosh

The Compendium



018-??? (9-7/16")

Anodized aluminum. Brushed satin finish on face, sides, top and bottom. Stepped transition between outer beveled edge and flat inner portion of face. Reversible. Attached with screws. Used on:

POWER AMPS:

MC 402

MC 252



MC 252

018-??? END CAPS - Used from 200? – 200?