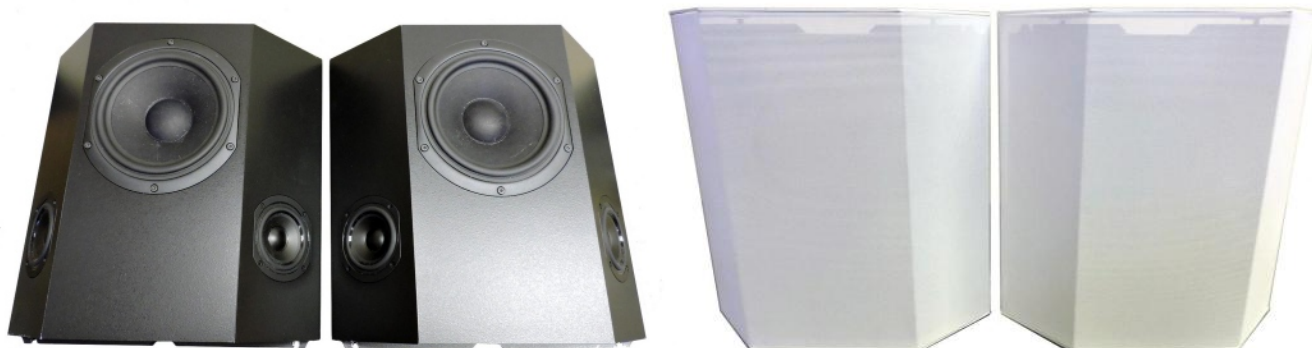


HT 30-OW

HOME THEATER SURROUND SPEAKER

McIntosh

The Compendium



DRIVERS: 2-way system with one 5-5/8" woofer and two 2-3/4" polypropylene Tweeters arranged in an Antiphase Dipole, Mirror Image configuration.

SPECIFICATIONS: **Frequency Response:** 80Hz to 20kHz. **Crossover:** 1kHz. **Impedance:** 4 ohms. **Sound Pressure Level:** 83dB (@2.8V/1M equivalent measured in the null). **Power Rating:** 200w.

OTHER: On-wall speaker system. Paintable white finish.

HT30-OW - Sold from 2012 - Current. S/N: ??1001~HZ???? (? ,???? UNITS)

Size: 14-3/16"H x 14-15/16"W x 4-1/16". **Weight:** 13 lb. each. **\$2,800.00/pr**